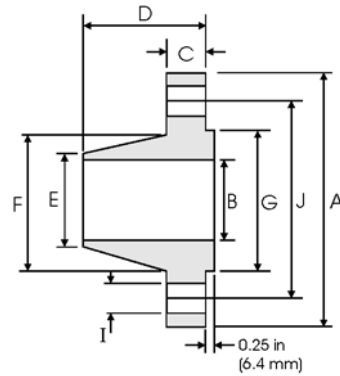




# Weld Neck Flanges - ANSI B16.5



## Class 1500 lb

Pipe		Flange Data				Hub Data		Raised Face	Drilling Data			Weight
Nominal Pipe Size		<b>A</b>	<b>B</b>	<b>C</b>	<b>D</b>	<b>E</b>	<b>F</b>	<b>G</b>	<b>H</b>	<b>I</b>	<b>J</b>	
	Outside Diameter	Overall Diameter	Inside Diameter	Flange Thickness min	Overall Length	Diameter at Weld Bevel	Hub Diameter	Face Diameter	Number of Holes	Bolt Hole Diameter	Diameter of Circle of Holes	kg/ piece
	in mm	in mm	in mm	in mm	in mm	in mm	in mm	in mm		in mm	in mm	
1/2	0.840	4.750	To be specified by Purchaser	0.880	2.380	0.840	1.500	1.380	4	0.880	3.250	1.87
	21.30	120.6		22.30	60.45	21.30	38.10	35.00		22.30	82.50	
3/4	1.050	5.120		1.000	2.750	1.050	1.750	1.690	4	0.880	3.500	2.56
	26.70	130.0		25.40	69.85	26.70	44.00	42.90		22.30	88.90	
1	1.315	5.880		1.120	2.880	1.320	2.060	2.000	4	1.000	4.000	3.74
	33.40	149.3		28.40	73.15	33.50	52.30	50.80		25.40	101.6	
1 1/4	1.660	6.250		1.120	2.880	1.660	2.500	2.500	4	1.000	4.380	4.33
	42.20	158.7		28.40	73.15	42.20	63.50	63.50		25.40	111.2	
1 1/2	1.900	7.000		1.250	3.250	1.900	2.750	2.880	4	1.120	4.880	5.94
	48.30	177.8		31.70	82.50	48.30	69.85	73.15		28.40	123.9	
2	2.375	8.500		1.500	4.000	2.380	4.120	3.620	8	1.000	6.500	10.8
	60.30	215.9		38.10	101.6	60.45	104.6	91.90		25.40	165.1	
2 1/2	2.875	9.620		1.620	4.120	2.880	4.880	4.120	8	1.120	7.500	15.0
	73.00	244.3		41.10	104.6	73.15	123.9	104.6		28.40	190.5	
3	3.500	10.50	1.880	4.620	3.500	5.250	5.000	8	1.250	8.000	19.9	
	88.90	266.7	47.70	177.3	88.90	133.3	127.0		31.70	203.2		
4	4.500	12.25	2.120	4.880	4.500	6.380	6.190	8	1.380	9.500	29.9	
	114.3	311.1	53.80	123.9	114.3	162.0	157.2		35.00	241.3		
5	5.563	14.75	2.880	6.120	5.560	7.750	7.310	8	1.620	11.50	55.4	
	141.3	374.6	73.15	155.4	141.2	196.8	185.7		41.10	292.1		
6	6.625	15.50	3.250	6.750	6.630	9.000	8.500	12	1.500	12.50	68.4	
	168.3	393.7	82.50	171.4	168.4	228.6	215.9		38.10	317.5		
8	8.625	19.00	3.620	8.380	8.630	11.50	10.62	12	1.750	15.50	117	
	219.1	482.6	91.90	212.8	219.2	292.1	269.7		44.40	393.7		
10	10.75	23.00	4.250	10.00	10.75	14.50	12.75	12	2.000	19.00	194	
	273.0	584.2	107.9	254.0	273.0	368.3	323.8		50.80	482.6		
12	12.75	26.50	4.880	11.12	12.75	17.75	15.00	16	2.120	22.50	288	
	323.8	673.1	123.9	282.4	323.8	450.8	381.0		53.80	571.5		
14	14.00	29.50	5.250	11.75	14.00	19.50	16.25	16	2.380	25.00	380	
	355.6	749.3	133.3	298.4	355.6	495.3	412.7		60.45	635.0		
16	16.00	32.50	5.750	12.25	16.00	21.75	18.50	16	2.620	27.75	485	
	406.4	825.5	146.0	311.1	406.4	552.4	469.9		66.55	704.8		
18	18.00	36.00	6.380	12.88	18.00	23.50	21.00	16	2.880	30.50	644	
	457.2	914.4	162.0	327.1	457.2	596.9	533.4		73.15	774.7		
20	20.00	38.75	7.000	14.00	20.00	25.25	23.00	16	3.120	32.75	775	
	508.0	984.2	177.8	355.6	508.0	641.3	584.2		79.25	831.8		
24	24.00	46.00	8.000	16.00	24.00	30.00	27.25	16	3.620	39.00	1232	
	609.6	1168.4	203.2	406.4	609.6	762.0	692.1		91.90	990.6		

### Notes

- Dimension B corresponds to the pipe inside diameter. Values quoted assume 40S/Standard wall thickness.
- Weights are based on manufacturer's data and are approximate.
- For ring joint facings see page 8-6. For weld end bevel see page 8-5.
- For tolerances see page 8-4.